



# ArcGIS for INSPIRE 10.8.2 Server Extension Installation Guide

## Content

1	Introduction.....	1
2	System Requirements.....	1
3	Installation.....	1
4	Upgrade Installation .....	2
5	Configuration.....	3
6	Software Authorization .....	4
7	Changes to the System .....	4
8	Performance Considerations.....	4
8.1	Spatial Index .....	4
8.2	Number of Instances .....	4
9	Services Configuration.....	5
9.1	INSPIRE View Service: GetFeatureInfo .....	5
9.1.1	Example: AdministrativeBoundary .....	5
9.1.2	GML Transformation Extension .....	6
9.2	Inspire_common:DEFAULT Style.....	7
9.3	Adding Custom Coordinate Reference Systems.....	8
9.4	Turn off streaming for INSPIRE Services.....	9
9.5	Turn off caching of INSPIRE Services getCapabilities documents .....	9
9.6	Create and use custom INSPIRE Services getCapabilities documents .....	9
10	Other Configurations.....	11
10.1	Configure ArcGIS for INSPIRE when ArcGIS services directory browsing is disabled .....	11
10.2	Increase Java Heap Size for an INSPIRE service to avoid performance issues .....	12
11	Localization.....	13
12	ArcGIS for INSPIRE Log Codes.....	13
13	Appendix: ArcGIS for INSPIRE 10.3.1 to 10.8.1 Special Upgrade Instructions .....	25

## 1 Introduction

The 'ArcGIS for INSPIRE Server Extension' is an essential core component of ArcGIS for INSPIRE. The extension contains the server-side functionality to add INSPIRE download and view services to ArcGIS Server in accordance with the INSPIRE directive.

This purpose of this document is to provide instructions on installation of the 'ArcGIS for INSPIRE Server Extension'; describe the changes made to the system once it is installed, performance considerations and possible modifications, and further configurations; and provide details for localization.

## 2 System Requirements

'ArcGIS for INSPIRE 10.8.2 Server Extension' requires ArcGIS Server 10.9.1. Make sure ".NET Extension Support" is selected when you install ArcGIS Server 10.9.1. See the System Requirements section of ArcGIS for INSPIRE web help at:

- [English](#)
- [French](#)
- [German](#)
- [Spanish](#)

ArcGIS for INSPIRE 10.8.2 can also work with ArcGIS Server 10.8.1 if you upgrade the server extension to ArcGIS for INSPIRE 10.8.1 Patch 2.

If you are installing ArcGIS for INSPIRE for the first time, see section **3 Installation**.

If you are upgrading from a previous version of ArcGIS for INSPIRE, see section **4 Upgrade Installation**.

## 3 Installation

The instructions for new installation for an ArcGIS site with a single GIS server are different than for a site with multiple GIS server machines. Please read the following instructions before installation.

Single GIS Server site – To install 'ArcGIS for INSPIRE Server Extension' on a single GIS server:

1. Verify that you have already installed ArcGIS Server on the machine where you'll be installing the 'ArcGIS for INSPIRE Server Extension'. ArcGIS Server 10.10.9.1 service should already be running.
2. Verify that you have administrative system rights to run the setup.
3. Navigate to the *ServerExt* folder and run setup.exe.
4. Follow instructions on the installation wizard interface.

The installation is now completed. Proceed to section **5 Configuration** to configure ArcGIS for INSPIRE.

Multiple GIS Server site – To install the ‘ArcGIS for INSPIRE Server Extension’ on a multiple GIS server site:

1. Setup an ArcGIS Server 10.9 or 10.9.1 Site with multiple GIS server machines.
2. Install ArcGIS for INSPIRE 10.8.2 server extension on each machine in the ArcGIS Server site, as described above.

The installation is now completed. Proceed to section **5 Configuration** to configure ArcGIS for INSPIRE.

## 4 Upgrade Installation

The instructions to upgrade for an ArcGIS site with a single GIS server are different than for a site with multiple GIS server machines. Please read the following instructions before upgrading.

NOTE: Upgrading from older versions (prior to 10.3.1) requires either starting fresh with version 10.8.2, or upgrading first to each subsequent version, e.g., 10.2.1 to 10.2.2 to 10.3.1. Please read the migration guide (MigrationGuide\_ArcGISForINSPIRE\_10\_8\_2\_EN.pdf) for further details. Once you have reached version 10.3.1, you may now proceed to upgrade to 10.8.

Single GIS Server site – To upgrade the ‘ArcGIS for INSPIRE Server Extension’ on a single GIS server:

1. Verify that you have already upgraded to ArcGIS Server 10.9.1 on the machine where you'll be installing the ‘ArcGIS for INSPIRE Server Extension’. ArcGIS Server 10.9.1 service should already be running.
  - a. **IMPORTANT:** If you’re upgrading directly from ArcGIS for INSPIRE 10.3.1, please see **13 Appendix: ArcGIS for INSPIRE 10.3.1 to 10.8.2 Special Upgrade Instructions**
2. Verify that you have administrative system rights to run the setup.
3. Navigate to the *ServerExt* folder and run setup.exe.
4. Follow instructions on the installation wizard interface. When upgrading from 10.6.1, you may get a warning about “...\handler.properties not found”. You can ignore this warning and continue installation by clicking “OK”.

The installation is now completed. Proceed to section **5 Configuration** to configure ArcGIS for INSPIRE.

Multiple GIS Server site – To upgrade the ‘ArcGIS for INSPIRE Server Extension’ on a multiple GIS server site:

1. NOTE: If you’re Verify that you have already upgraded to ArcGIS Server 10.9.1 on the machine where you'll be installing the ‘ArcGIS for INSPIRE Server Extension’. ArcGIS Server 10.8 service should already be running.
  - a. **IMPORTANT:** If you’re upgrading from ArcGIS for INSPIRE 10.3.1, please see **13 Appendix: ArcGIS for INSPIRE 10.3.1 to 10.8.2 Special Upgrade Instructions**
2. Verify that you have administrative system rights to run the setup on each GIS server machine.
3. Navigate to the *ServerExt* folder and run setup.exe on each GIS server machine.

4. Follow instructions on the installation wizard interface on each GIS Server machine. When upgrading from 10.6.1, you may get a warning about "...\\handler.properties not found". You can ignore this warning and continue installation by clicking "OK".

The installation is now completed. Proceed to section **5 Configuration** to configure ArcGIS for INSPIRE.

## 5 Configuration

After you've successfully installed the 'ArcGIS for INSPIRE Server Extension' on a single or multi-machine environment, you will need to run the 'ArcGIS for INSPIRE Configuration Utility' to configure and upload the 'ArcGIS for INSPIRE Server Object Extension', and deploy configuration files.

Follow the instructions below to run the 'ArcGIS for INSPIRE Configuration Utility':

1. The 'ArcGIS for INSPIRE Configuration Utility' configures the ArcGIS site and should be executed only on the primary site GIS server.
2. Verify that you have administrative system rights to run the 'ArcGIS for INSPIRE Configuration Utility'.
3. Setup a directory for the ArcGIS for INSPIRE configuration files to be deployed to. The ArcGIS Server service user needs at least Modify access to this directory. (If configuring for a multiple GIS server site, setup a shared directory for all ArcGIS Server site machines to access. And make sure the users for all ArcGIS Server services have Modify access to this directory.)
4. Login to the primary site GIS Server and start the 'ArcGIS for INSPIRE Configuration Utility' by clicking the shortcut in the Start menu under ArcGIS for INSPIRE > Configuration. Answer "Yes" to the User Account Control window.
5. Enter the ArcGIS Server Site Administrator Username and Password and click "Connect".
6. The Utility will connect to ArcGIS Server and display the Configure parameters section.
7. Enter the following configuration parameters:
  - a. Configuration Directory – enter the directory that was setup in Step 3, into the Configuration Directory parameter text box (use UNC path if the ArcGIS site has multiple GIS machines).
  - b. Output Directory – the recommended path for the Output Directory will be generated based on the default ArcGIS Output directory location. If you are doing an upgrade, the existing path for the ArcGIS for INSPIRE Output Directory will be used.
8. Click "Configure".
9. The Configuration Utility will display a Summary window with the configuration information. Click Apply to begin the configuration.
10. The Configuration Utility will perform the ArcGIS for INSPIRE configuration.

ArcGIS for INSPIRE is now configured.

**Note:** During configuration of the 'ArcGIS for INSPIRE - Server Extension' a new ArcGIS Server output directory is created called "arcgisforinspire". Due to the behaviour of the ArcGIS Server publishing process, this new output directory, in most cases, becomes the default directory entry for the Output Directory in the Service Editor Parameters

window when publishing new ArcGIS services. This entry can be changed by using the drop-down control, enabling the selection of other registered output directories.

## 6 Software Authorization

After installing and configuring the software, you must authorize it for use if you have not done so already. Log in to the Esri Customer Care portal ([customers.esri.com](https://customers.esri.com)) using your Esri Global Account to obtain the authorisation numbers.

To enable the 'ArcGIS for INSPIRE Server Extension', launch the Software Authorization tool from Programs > ArcGIS > Software Authorization and restart the ArcGIS Server Windows service.

## 7 Changes to the System

The 'ArcGIS for INSPIRE Server Extension' installation and configuration will result in the following changes to your system:

- It deploys the ArcGIS for INSPIRE files and folders to the install directory. (e.g., *C:\Program Files\ESRI\ArcGIS for INSPIRE*)
- It registers the XtraSrvCOM.dll with the system.
- It creates an ArcGIS Server registered directory to store web-accessible content (e.g., *C:\arcgisserver\directories\arcgisforinspire*).
- It copies the ArcGIS for INSPIRE Configuration files to a user defined location.
- It updates and registers the ArcGIS for INSPIRE SOE with ArcGIS Server

## 8 Performance Considerations

This section describes aspects that may impact system performance and suggests possible ways to adjust them. System performance can be affected by many factors such as hardware infrastructure, data management solutions, and map document design. For detailed information on best practices and performance considerations, refer to the [Architecting the ArcGIS Platform: Best Practices \[PDF\]](#).

### 8.1 Spatial Index

Make sure that each feature class in the INSPIRE geodatabase contains a spatial index and that the spatial index has been refreshed after the data is loaded. Adding a spatial index to the geodatabase will impact system performance. In addition, all the fields capable of being indexed in the INSPIRE geodatabase will affect system performance.

### 8.2 Number of Instances

When determining the maximum number of instances for a service, consider the following:

- The number of site machines available
- The number of map services to be deployed

- The maximum number of processes required

The start-up process of an INSPIRE network service may take a little bit longer than you are used to. This is because both the INSPIRE view service and the INSPIRE feature download service need to initialise and verify the INSPIRE data model at the geodatabase level. Once the service is started, it should perform similarly to other ArcGIS Server services.

For operating the services, it is recommended that you set the minimum number of instances to the same value as the maximum number of instances. If the minimum number is lower than the maximum number, this can lead to a server object container (SOC) process start-up when the service is loaded during operation. Because start-up will take time, if a new SOC instance must start on the fly, it will slow down the response to a request.

## 9 Services Configuration

This section provides information on how to configure the INSPIRE services.

### 9.1 INSPIRE View Service: GetFeatureInfo

Executing a GetFeatureInfo request on a view service instance results in an INSPIRE feature download service request (operation GetFeature) to the internal feature server engine.

Since the GetFeatureInfo operation supports HTML as the return type of the operation, the created Geography Markup Language (GML) of the INSPIRE feature download service has to be transformed from XML to human-readable HTML.

ArcGIS for INSPIRE has several Extensible Style Language (XSL) style sheets that transform XML to HTML. These style sheets can be found in the ArcGIS for INSPIRE configuration folder chosen when running the Configuration Utility. See the folder templates for the XSL files.

There are two important files under the template directory:

- The `wfs-getfeature-response-transform.xml` file is the root template that includes all other templates.
- The `featureTypesTableHeader.xml` file contains HTML table headings for each feature type supported. All other `*.xml` files (referenced by `_featureTypeIncludes.xml` and located in the `includes` subfolder) deal with a specific INSPIRE layer.
- These files are dedicated to encapsulating the specific GML application schema knowledge inside the file.

#### 9.1.1 Example: AdministrativeBoundary

Figure 1 shows an example of transforming XML to HTML in the GetFeatureInfo operation. The `includes/au_AdministrativeBoundary.xml` file is responsible for selecting values from the returned GML string of a GetFeatureInfo request on the INSPIRE AU:AdministrativeBoundary layer. This layer is transformed to a GetFeature request on spatial object type AU:AdministrativeBoundary.

```
<?xml version="1.0" encoding="UTF-8"?>
  <!--
    This Style Sheet is used to transform Inspire GML Data into html for
    the GetFeatureInfo requests of a ViewService. You can reference other
    style sheets relative!
  -->
<xsl:stylesheet version="2.0" xmlns="http://www.w3.org/1999/xhtml"
  xmlns:xsl="http://www.w3.org/1999/XSL/Transform" xmlns:xs="http://www.w3.org/2001/XMLSchema"
  xmlns:gml="http://www.opengis.net/gml/3.2" xmlns:xlink="http://www.w3.org/1999/xlink"
  xmlns:p="http://conterra.de/xslt/params" xmlns:util="xalan://de.conterra.suite.ifc.soc.common.xml.XSLTFunctions"
  xmlns:au="urn:x-inspire:specification:gmlas:AdministrativeUnits:3.0"
  xmlns:gmd="http://www.isotc211.org/2005/gmd"
  exclude-result-prefixes="xlink xsl xs gml p util au gmd">

  <!--
    template writes the gml au:AdministrativeBoundary feature types, please see the
    "featureTypes-TableHeads.xsl for the required columns
  -->
  <xsl:template match="au:AdministrativeBoundary">
    <tr>
      <td>
        <xsl:value-of select="@gml:id" />
      </td>
      <xsl:apply-templates mode="administrativeboundary" />
    </tr>
  </xsl:template>

  <xsl:template match="au:country" mode="administrativeboundary">
    <td>
      <xsl:value-of select="//gmd:Country/text()" />
    </td>
  </xsl:template>

  <xsl:template match="text()|@*" mode="administrativeboundary">
    <!-- disable the default copy templates of attributes and text nodes -->
  </xsl:template>
</xsl:stylesheet>
```

**Figure 1: File au\_AdministrativeBoundary.xsl for Transforming GML Response of AU:AdministrativeBoundary**

### 9.1.2 GML Transformation Extension

If the HTML file resulting from a GML transformation needs to be adjusted for a specific INSPIRE layer, two files should be modified:

- The file named according to the INSPIRE layer. For example, if you have an INSPIRE layer with the name au:AdministrativeBoundary, use the au\_AdministrativeBoundary.xsl file.
- The featureTypesTableHeader.xsl file.

Additional XSL SELECT statements can be added to meet the needs of your organisation. For example, if you want to display the gml:geometry string in your HTML response, you would select this using the proper XSL statement.

The HTML output creates a flat table of attributes and their associated values. If you are going to extend the number of output properties, you also need to add the corresponding table headers. This can be done by modifying the featureTypesTableHeader.xsl file.

The number of selected attributes in the INSPIRE layer-specific XSL file and the number of HTML table header fields should be the same. Any changes made to the XSL files will take effect after restarting the view service instance.

## 9.2 Inspire\_common:DEFAULT Style

The ArcGIS Server configuration folder for ArcGIS for INSPIRE also contains a folder named slds (for example: C:\arcgisforinspireconfig\slds). This folder contains Style Layer Descriptor rules for all layers referenced in the INSPIRE data specifications of INSPIRE Annex I data themes. See figure 2 below as an example.

```
<?xml version="1.0" encoding="UTF-8" standalone="yes" ?>
- <sld:StyledLayerDescriptor xmlns:ogc="http://www.opengis.net/ogc" xmlns:sld="http://www.opengis.net/sld" version="1.0.0"
  xmlns:xsi="http://www.w3.org/2001/XMLSchema-instance"
  xsi:schemaLocation="http://www.opengis.net/sld ../schema/ogc/sld/1.0.0/StyledLayerDescriptor.xsd">
- <sld:NamedLayer>
  <sld:Name>AU.AdministrativeUnit</sld:Name>
- <sld:UserStyle>
  <sld:Name>inspire_common:DEFAULT</sld:Name>
  <sld:IsDefault>1</sld:IsDefault>
- <sld:FeatureTypeStyle>
  <!-- <sld:Description>
  <sld:Title>Administrative Unit Default Style</sld:Title>
  <sld:Abstract>The administrative unit is rendered using a yellow (#FFFF66) fill.</sld:Abstract>
  </sld:Description>
  -->
- <sld:Rule>
- <sld:PolygonSymbolizer>
- <sld:Fill>
  <sld:CssParameter name="fill">#FFFF66</sld:CssParameter>
  </sld:Fill>
</sld:PolygonSymbolizer>
</sld:Rule>
</sld:FeatureTypeStyle>
</sld:UserStyle>
</sld:NamedLayer>
</sld:StyledLayerDescriptor>
```

Figure 2: SLD Example for AU:AdministrativeBoundary

By default, the styles available in this folder will be used to visualize the INSPIRE layers.

In addition, ArcGIS for INSPIRE makes the defined ArcMap style available for use within INSPIRE view services (figure 3).

```
<Style>
  <Name>default</Name>
  <Title>2</Title>
  <LegendURL height="16" width="32">
    <Format>image/png</Format>
    <OnlineResource xmlns:xlink="http://www.w3.org/1999/xlink" xlink:href="http://neale.dev.esri-de.com:8399/arcgis/services/">
  </LegendURL>
</Style>
<Style>
  <Name>inspire_common:DEFAULT</Name>
  <Title>inspire_common:DEFAULT</Title>
  <LegendURL height="16" width="200">
    <Format>image/png</Format>
    <OnlineResource xmlns:xlink="http://www.w3.org/1999/xlink" xlink:href="http://neale.dev.esri-de.com:8399/arcgis/services/">
  </LegendURL>
</Style>
</Layer>
<Layer queryable="1">
  <Name>AU.NUTSRegion</Name>
  <Title>NUTS Region</Title>
  <Abstract>Layer NUTS Region</Abstract>
  <CRS>CRS:84</CRS>
  <CRS>EPSG:4326</CRS>
  <CRS>EPSG:4258</CRS>
```

Figure 3: Styles Available in the View Service Capabilities

The SLD files are configured to run on the geodatabase. If you want to modify these styles, understand that you are responsible for aligning with SLD specifications and the underlying database structure.

**Note:** In order to have custom designed legend graphics for each layer, language, and style, you have to save the graphic image to <ArcGIS Server Directories>\arcgisforinspire\<<MapServiceName>\_MapServer with naming schema <layer>\_<language>\_<style>.png . (e.g. for layer 'sr.shoreline' with style



'inspire\_common\_default' and language 'eng' the file would be named sr.shoreline\_eng\_inspire\_common\_default.png. The file would be saved in folder C:\arcgisserver\directories\arcgisforinspire\sr\_MapServer)

### 9.3 Adding Custom Coordinate Reference Systems

ArcGIS for INSPIRE allows you to add additional coordinate reference systems (CRS) to be supported. The approach is a bit different than the one for Web Map Service (WMS) server instances, as it requires that you copy and edit a configuration file called inspire-constants.properties:

1. Copy the SOE file from C:\arcgisserver\config-store\extns\arcgis-for-inspire.soe to a temporary location.
2. Rename it arcgis-for-inspire.zip.
3. Unpack the ZIP file and locate a4i-ags-common.jar under the Install directory.
4. Rename it a4i-ags-common.zip and unzip it again.
5. Locate inspire-constants.properties under the unzipped directory.
6. Copy the file to the arcgisforinspire directory under config-store location. This is a template file available for your customizations (e.g., C:\arcgisserver\config-store\arcgisforinspire\inspire-constants.properties).

Once the file is available in the above location, the copied file will be used instead of the one contained in the SOE extension file.

7. Open the file with an editor and locate the property supported.crs.codes.
8. Add a comma-separated list of EPSG codes you want to add. Notice that you also can add EPSG code ranges (e.g., EPSG:25830-25838).
9. Changes will take effect upon restart of each ArcGIS map service instance:
  - a. Each CRS will be listed in the view service's GetCapabilities response.
  - b. Corresponding to each CRS, a BoundingBox element will be added to each layer element.

**Note:** As the feature server back-end does not support all EPSG codes, it will reject systems not currently supported.

When setting up an INSPIRE view service, a GetFeatureInfo request won't be forwarded to the feature server. Instead, it will be forwarded to the underlying ArcGIS WMS server.

When setting up an INSPIRE feature download service, the configured system won't be supported by the A4I feature download service.

In both cases, you will find a log message in the ArcGIS Server log files: "CRS <unsupportedCRS> is currently not supported and will not be available when accessing the feature service."

## 9.4 Turn off streaming for INSPIRE Services

Starting with ArcGIS 10.2.2 SP1 for INSPIRE, streaming is enabled by default for INSPIRE download services, and ArcGIS for INSPIRE allows you to turn off streaming for both type of services if necessary, following are the steps to turn off streaming:

1. Stop the service that need to have streaming turned off.
2. Go to the service configuration folder (e.g., C:\arcgisserver\config-store\services\abup2.MapServer).
3. Open JSON configuration file (e.g., abup2.MapServer.json).
4. Search "streamingEnabled": "true", and change the value to "false".
5. Save the file, then restart the service.

## 9.5 Turn off caching of INSPIRE Services getCapabilities documents

By default ArcGIS for INSPIRE creates service-level capabilities documents when the service starts. To turn off caching for both types of INSPIRE services:

1. Stop the service that need to have caching of capabilities documents turned off.
2. Go to the service configuration folder (e.g., C:\arcgisserver\config-store\services\abup2.MapServer).
3. Open JSON configuration file (e.g., abup2.MapServer.json).
4. Search " cacheGetCapabilities": "true", and change the value to "false".
5. Save the file, then restart the service.

## 9.6 Create and use custom INSPIRE Services getCapabilities documents

ArcGIS for INSPIRE allows you to apply changes (for example keywords) to the getCapabilities documents returned by WMS and WMTS-based INSPIRE View services as well as WFS-based INSPIRE Download services.

If "cacheGetCapabilities" is set to false then getCapabilities reponse is generated dynamically and cannot be override by a custom getCapabilities file. This means that all properties authored in ArcCatalog property pages are reflected in the response.

If "cacheGetCapabilities" is set to true then getCapabilities response is generated every time service is restarted and file is cached for each version and supported languages.

### **View service instructions**

If the administrator decides to create and use a custom getCapabilities response, then GetCapabilities<version>\_<3 letter language code>\_custom.xml filename needs to be used at the service cached capabilities folder (for example c:\arcgisserver\directories\arcgisforinspire\GEMR\_MapServer\GEMR\_MapServer\_inspireview).

If a custom getCapabilities file is found in the folder, the file is used to respond to getCapabilities request for that specific version and language level. For example, GetCapabilities130\_FRE\_custom.xml would be used when responding to a getCapabilities request with parameter Language=FRE and version=1.3.0 and

service=WMS request parameters. If there is no custom cached file in the directory for that particular language and version configuration the regular cached getCapabilities files are used to respond. The administrator therefore may choose to use custom cache file for certain version and/or language and use default for others. Custom cached getcapabilities file is not deleted when service is restarted. Only default cached getcapabilities files are deleted and recreated.

For WMTS-based getCapabilities the custom file name pattern is WMTSGetCapabilities100\_<3 letter language code>\_custom.xml.

### **Download service instructions**

If the administrator decides to use a custom getcapabilities response, then GetCapabilities<version>\_<3 letter language code>\_custom.xml filename needs to be used at the service cached capabilities folder (for example c:\arcgissserver\directories\arcgisforinspire\GEMR\_MapServer\GEMR\_MapServer\_inspiredownload).

If a custom getCapabilities file is found in the folder, the file is used to respond to getCapabilities request for that specific version and language level. For example, GetCapabilities200\_FRE\_custom.xml would be used when responding to a getCapabilities request with parameter Language=FRE and version=2.0.0 and service=WFS request parameters. If there is no custom cached file in the directory for that particular language and version configuration, the regular cached getCapabilities files are used to respond. The administrator therefore may choose to use custom cache file for certain version and/or language and use default for others. Custom cached getcapabilities file is not deleted when service is restarted. Only default cached getcapabilities files are deleted and recreated.

## 10 Other Configurations

### 10.1 Configure ArcGIS for INSPIRE when ArcGIS services directory browsing is disabled

If the ArcGIS Services directory browsing has been disabled, some manual configuration is needed to allow the ArcGIS for INSPIRE rest requests to function correctly. Follow the steps below to make these configurations.

- 1) Make a backup copy of web.xml that should be located at <ArcGIS Server install>\Server\framework\runtime\tomcat\webapps\arcgis#rest\WEB-INF
- 2) Locate the Patches folder installed under the ArcGIS for INSPIRE – Server extension install folder (i.e. <ArcGIS for INSPIRE – ServerExt Install>\Patches). Replace the web.xml file with the web.xml file included in the ArcGIS for INSPIRE – ServerExt installation Patches folder. If the file was previously customized it is recommended to modify the existing web.xml by adding the specific InspireFilter filter section as defined in the included web.xml. If the ArcGIS site includes multiple machines, this process must be repeated in each GIS machine.

**Important:** When updating the ArcGIS Server Security Configuration using the ArcGIS Admin site, the web.xml file referenced above will be overwritten by ArcGIS Server. In this case the following <filter> and <filter-mapping> XML elements will need to be added back into the newly written web.xml file after the last </context-param> or </listener> node.

```
<filter>
<filter-name>InspireFilter</filter-name>
<filter-class>com.esri.a4i.soe.filter.InspireFilter</filter-class>
</filter>

<filter-mapping>
<filter-name>InspireFilter</filter-name>
<url-pattern>*/</url-pattern>
</filter-mapping>
```

Example:

```
</context-param>
<!-- <context-param><param-name>com.esri.discovery.REMOTE_SERVER_FILE</param-
name><param-value>servers/server.properties</param-value></context-param> -->
```

```
<filter>
<filter-name>InspireFilter</filter-name>
<filter-class>com.esri.a4i.soe.filter.InspireFilter</filter-class>
</filter>
```

```
<filter-mapping>
<filter-name>InspireFilter</filter-name>
<url-pattern>/*</url-pattern>
</filter-mapping>
```

```
<listener>
```

- 3) Copy the a4i-ags-filter.jar, also included in the ArcGIS for INSPIRE – ServerExt installation Patches folder, to the<ArcGIS Server install>\Server\framework\runtime\tomcat\webapps\arcgis#rest\WEB-INF\lib.
- 4) Restart the ArcGIS Server service.

## 10.2 Increase Java Heap Size for an INSPIRE service to avoid performance issues

If an INSPIRE service experience performance or running out of memory issues for long running INSPIRE services, it is recommended to increase Java heap size for these services to avoid performance issues.

- 1) Make sure the service is started in ArcGIS Manager,
- 2) Login to the ArcGIS Server ‘admin’ application through <https://<host>:<port>/arcgis/admin>,
- 3) Select ‘services’ link,
- 4) Select the service to increase heap memory,
- 5) Scroll to the bottom of the page and select ‘edit’,
- 6) Update or add the following entry as shown:

```
{
  <some properties>,
  "properties": {
    <some properties>,
    "javaHeapSize": "256"
  }
}
```

- 7) Press ‘Save Edits’,
- 8) Restart the service in ArcGIS Manager.

## 11 Localization

The 'ArcGIS for INSPIRE Desktop Extension' is localized in French, Spanish, and German languages. If you have an ArcGIS language supplement of these languages installed, ArcGIS for INSPIRE will make use of localized messages.

The 'ArcGIS for INSPIRE Server Extension' is localisable to other European Member State languages in terms of how the ArcGIS for INSPIRE network services respond to user requests. Follow instructions in the "ArcGIS for INSPIRE Localisation" section of the ArcGIS for INSPIRE web help.

## 12 ArcGIS for INSPIRE Log Codes

The ArcGIS for INSPIRE log codes

Code Number	Topic	Description
<b>95001 - 95099</b>	<b>Server config</b>	<b>SSL and GIS Machines</b>
95001	SERVER_CONFIG	General server configuration.
95002	SERVER_CONFIG_SERVICE_INFO	General server service information.
<b>95100 - 95199</b>	<b>SOE config parameters</b>	<b>The Config Folder and SSL</b>
95100	SOE_CONFIG	INSPIRE specific service configuration.
95101	SOE_SSL	General SSL information.
95102	SOE_SSL_RESPONSE_CODE	SSL response code.
95103	SOE_SSL_CIPHER_SUITE	SSL cipher suite information.
95104	SOE_SSL_CERT_TYPE	SSL certification type.
95105	SOE_SSL_CERT_HASH_CODE	SSL certificate hash code.
95106	SOE_SSL_PUBLIC_KEY_ALGO	SSL public key algorithm.
95107	SOE_SSL_PUBLIC_KEY_FORMAT	SSL public key format.
95108	SOE_CONFIG_PATH	INSPIRE services configuration store path.

95109	SOE_CONFIG_PATH_ERR	Could not read configuration store location.
95110	SOE_CONFIG_STREAMING	Streaming response configuration for INSPIRE services.
95111	SOE_SERVICE_REST_URL	INSPIRE service REST url.
95112	SOE_SSL_REST_CLIENT_CERTIFICATE_TRUST_ALL	Allow self-signed certificate on HTTPS url resources requested by REST client.
95113	SOE_SSL_REST_CLIENT_CERTIFICATE_TRUST_ERR	Error occurred while trusting self-signed certificate on HTTPS url resources requested by REST client.
95114	SOE_SSL_REST_CLIENT_PROCESS_REQUEST_ERR	Error occurred while processing HTTPS request in REST client.
95115	SOE_SSL_REST_CLIENT_JSON_RESPONSE_ERR	Error occurred while processing JSON HTTPS response in REST client.
95116	SOE_REST_CLIENT_READ_CHARS	Error occurred while reading characters in REST client.
95117	SOE_REST_CLIENT_JSON_RESPONSE_ERR	Error occurred while processing JSON HTTP response in REST client.
95118	SOE_REST_CLIENT_SEND_REQUEST_ERR	Error occurred while sending request from REST client.
95119	SOE_REST_CLIENT_CERTIFICATE_TRUST_ALL	Allow self-signed certificate on url resources requested by REST client.
95120	SOE_REST_CLIENT_CERTIFICATE_TRUST_ERR	Error occurred while trusting self-signed certificate.
95121	SOE_REST_CLIENT_PROCESS_REQUEST_ERR	Error occurred while processing request in REST client.
<b>95200 - 95399</b>	<b>INSPIRE service instance config</b>	<b>Gdb templates included and backend server component init config parameters</b>
95200	INSPIRE_SERVICE_CONFIG	General inspire service configuration.
95201	INSPIRE_INVALID_WORKSPACE	INSPIRE Service without a corresponding INSPIRE GDB as data store.
95202	INSPIRE_FAILOVER_WORKSPACE	Using first available workspace as failover workspace.
95203	INSPIRE_FAILOVER_NO_WORKSPACE	No available workspace to use as failover workspace.

	CE	
95204	INSPIRE_SERVICE_JSON_FETCH	Reading INSPIRE service JSON.
95205	INSPIRE_SERVICE_LOOKUP_URL	INSPIRE service REST Admin url.
95206	INSPIRE_SERVICE_LOOKUP_URL_PARAMETERS	INSPIRE service REST Admin url parameters.
95207	INSPIRE_SERVICE_EDIT_URL	INSPIRE service REST Admin edit resource url.
95208	INSPIRE_SERVICE_EDIT_URL_PARAMETERS	INSPIRE service REST Admin edit resource url parameters.
95209	INSPIRE_SERVICE_JSON_EXTN_PROPS_UPDATE_SUCCESS	INSPIRE service extension JSON properties update successful.
95210	INSPIRE_SERVICE_JSON_EXTN_PROPS_UPDATE_ERR	Error occurred while updating INSPIRE service extension JSON properties.
95211	INSPIRE_SERVICE_JSON_UPDATE_ERR	Exception in INSPIRE service extension JSON properties update.
95212	INSPIRE_SERVICE_JSON_UPDATE	INSPIRE service extension JSON properties updated.
95300	SOE_XTRASERVER_COMMUNICATION	General INSPIRE SOE to backend server component communication.
95301	SOE_XTRASERVER_COMMUNICATION_REQUEST	Forwarding WFS request to backend server component.
95302	SOE_XTRASERVER_COMMUNICATION_LOG_DUMP_ERR	Error occurred while trying to dump XtraServer logs.
95303	SOE_XTRASERVER_COMMUNICATION_SHUTDOWN_FAILED	Failed to shutdown backend server component.
95304	SOE_XTRASERVER_COMMUNICATION_INVALID_INSPIRE_WORKSPACE	Can't create WFS Server backend without a valid INSPIRE workspace.
95305	SOE_XTRASERVER_COMMUNICATION_NO_FEATURETYPES_CONFIGURED	Aborting WFS Server backend creation, no feature types configured.
95306	SOE_XTRASERVER_COMMUNICATION_INIT	Create new backend server component instance for INSPIRE service.



95307	SOE_XTRASERVER_COMMUNICATION_DB_SCHEMA	Database schema name passed to backend server component from INSPIRE SOE.
95308	SOE_XTRASERVER_COMMUNICATION_PARAMETER_TEMPLATE_INFO	Gdb Template information passed to backend server component from INSPIRE SOE.
95309	SOE_XTRASERVER_COMMUNICATION_PARAMETER_TEMPLATE_INFO_TEMPLATES	Gdb Templates theme names parameter passed to backend server component from INSPIRE SOE.
95310	SOE_XTRASERVER_COMMUNICATION_PARAMETER_TEMPLATE_INFO_VERSION	Gdb Template version parameter passed to backend server component from INSPIRE SOE.
95311	SOE_XTRASERVER_COMMUNICATION_PARAMETER_TEMPLATE_INFO_GN_PROFILE	Geographic Names profile parameter passed to backend server component from INSPIRE SOE.
95312	SOE_XTRASERVER_COMMUNICATION_PARAMETER_COMMON_PROPERTIES	Common properties parameters passed to backend server component from INSPIRE SOE.
95313	SOE_XTRASERVER_COMMUNICATION_PARAMETER_COMMON_PROPERTY	Common property parameters passed to backend server component from INSPIRE SOE.
95314	SOE_XTRASERVER_COMMUNICATION_PARAMETER_CRS	CRS parameter passed to backend server component from INSPIRE SOE.
95315	SOE_XTRASERVER_COMMUNICATION_PARAMETER_CRS_NOT_SUPPORTED	CRS parameter not passed to backend server component from INSPIRE SOE.
95316	SOE_XTRASERVER_COMMUNICATION_PARAMETER_FEATURETYPES	FeatureTypes parameter passed to backend server component from INSPIRE SOE.
95317	SOE_XTRASERVER_COMMUNICATION_PARAMETER_FEATURETYPE	FeatureType parameter passed to backend server component from INSPIRE SOE.
95318	SOE_XTRASERVER_COMMUNICATION_PARAMETER_FEATURETYPE_METADATA_URL	FeatureType metadata url parameter passed to backend server component from INSPIRE SOE.
95319	SOE_XTRASERVER_COMMUNICATION_PARAMETER_LANGUAGES	Languages parameter passed to backend server component from INSPIRE SOE.

95320	SOE_XTRASERVER_COMMUNICATION_PARAMETER_EXTERNAL_REFERENCES	External references parameter passed to backend server component from INSPIRE SOE.
95321	SOE_XTRASERVER_COMMUNICATION_PARAMETER_ONLINE_RESOURCE_GET	Online resource GET endpoint parameter passed to backend server component from INSPIRE SOE.
95322	SOE_XTRASERVER_COMMUNICATION_PARAMETER_ONLINE_RESOURCE_POST	Online resource POST endpoint parameter passed to backend server component from INSPIRE SOE.
95323	SOE_XTRASERVER_COMMUNICATION_PARAMETER_CONFIG_PATH	INSPIRE configuration store path parameter passed to backend server component from INSPIRE SOE.
95324	SOE_XTRASERVER_COMMUNICATION_PARAMETER_CONFIG_FILE_PATH	INSPIRE configuration file path parameter passed to backend server component from INSPIRE SOE.
95325	SOE_XTRASERVER_COMMUNICATION_PARAMETER_SCHEMA_URL	Schema url parameter passed to backend server component from INSPIRE SOE.
95326	SOE_XTRASERVER_COMMUNICATION_PARAMETER_SCHEMA_PATH	Schema path parameter passed to backend server component from INSPIRE SOE.
95327	SOE_XTRASERVER_COMMUNICATION_INIT_FAILED	Initialization of backend server component backend failed.
95328	SOE_XTRASERVER_COMMUNICATION_INIT_FAILED_NOT_REGISTERED	backend server component was not registered and cannot be initialized. Please run INSPIRE repair installation
95329	STORED_QUERY_DOWNLOAD_START_PRODUCTION	Started submitting stored query processing jobs.
95330	STORED_QUERY_DOWNLOAD_STOP_PRODUCTION	Stop a stored query processing job.
95331	STORED_QUERY_DOWNLOAD_STOPPED_PRODUCTION	Stopped all stored query processing jobs.
95332	STORED_QUERY_DOWNLOAD_START_PRODUCTION	Start a stored query processing job.
95333	STORED_QUERY_DOWNLOAD_CHECK_JOB	Check a stored query processing job.

95334	STORED_QUERY_DOWNLOAD_JOB_DONE	Stored query processing job completed.
95335	STORED_QUERY_DOWNLOAD_JOB_ERR	Error occurred while processing stored query processing job.
<b>95400 - 95449</b>	<b>CACHING</b>	<b>Custom files and generation</b>
95400	CACHING	General caching INSPIRE service GetCapabilities information.
95401	CACHING_DOWNLOAD_CREATE_DIRECTORY	INSPIRE feature download service cache directory creation.
95402	CACHING_DOWNLOAD_DIRECTORY_EXISTS	INSPIRE feature download service cache directory exists.
95403	CACHING_DOWNLOAD_GETCAPABILITIES_FILE_READ_ERR	INSPIRE feature download service cached GetCapabilities file read error.
95404	CACHING_DOWNLOAD_GETCAPABILITIES_CUSTOM_FILE_EXISTS	INSPIRE feature download service cached custom GetCapabilities file exists.
95405	CACHING_DOWNLOAD_GETCAPABILITIES_GENERATED_FILE_EXISTS	INSPIRE feature download service cached GetCapabilities file exists.
95406	CACHING_DOWNLOAD_GETCAPABILITIES_RESPONSE	INSPIRE feature download service generated cached GetCapabilities file from response.
95407	CACHING_DOWNLOAD_GETCAPABILITIES_RESPONSE_ERR	Error occurred while generating INSPIRE feature download service cached GetCapabilities file from response.
95408	CACHING_DOWNLOAD_GETCAPABILITIES_ERR	Error occurred while processing INSPIRE feature download service cache GetCapabilities request.
95409	CACHING_DOWNLOAD_STARTING_JOBS	Starting to process INSPIRE feature download GetCapabilities cache request.
95410	CACHING_DOWNLOAD_CHECKING_JOBS	Checking INSPIRE feature download GetCapabilities cache jobs.
95411	CACHING_DOWNLOAD_JOBS_ERR	Error occurred while executing INSPIRE feature download GetCapabilities cache jobs.
95412	CACHING_DOWNLOAD_JOBS_COMPLETED	INSPIRE feature download GetCapabilities cache jobs completed execution.

95413	CACHING_DOWNLOAD_SUBMIT_PRODUC TION	INSPIRE feature download GetCapabilities cache jobs submitted.
95414	CACHING_DOWNLOAD_STOP_PRODUC TION	INSPIRE feature download GetCapabilities cache job stopped.
95415	CACHING_DOWNLOAD_STOPPED_PRODUC TION	INSPIRE feature download GetCapabilities cache jobs stopped.
95416	CACHING_DOWNLOAD_GETCAPABILITIES_FILE_DOES_NOT_EXISTS	INSPIRE feature download GetCapabilities cached file does not exist.
95417	CACHING_VIEW_GETCAPABILITIES_CUSTOM_FILE_EXISTS	INSPIRE view service GetCapabilities custom cache file exists.
95418	CACHING_VIEW_GETCAPABILITIES_GENERATED_FILE_EXISTS	INSPIRE view service GetCapabilities cache file exists.
95419	CACHING_VIEW_GETCAPABILITIES_RESPONSE	INSPIRE view service GetCapabilities cache file generated from response.
95420	CACHING_VIEW_GETCAPABILITIES_RESPONSE_ERR	Error occurred while generating INSPIRE view service GetCapabilities cache file from response.
95421	CACHING_VIEW_GETCAPABILITIES_ERR	Error occurred while accessing INSPIRE view service GetCapabilities cached file.
95422	CACHING_VIEW_STARTING_JOBS	Starting INSPIRE view service GetCapabilities cache jobs.
95423	CACHING_VIEW_CHECKING_JOBS	Checking INSPIRE view service GetCapabilities cache jobs.
95424	CACHING_VIEW_JOBS_ERR	Error occurred executing INSPIRE view service GetCapabilities cache jobs.
95425	CACHING_VIEW_JOBS_COMPLETED	Starting INSPIRE view service GetCapabilities cache jobs completed execution.
95426	CACHING_VIEW_SUBMIT_PRODUC TION	INSPIRE view service GetCapabilities cache jobs submitted.
95427	CACHING_VIEW_STOP_PRODUCTI ON	INSPIRE view service GetCapabilities cache job stop production.
95428	CACHING_VIEW_STOPPED_PRODUC TION	INSPIRE view service GetCapabilities cache jobs stopped production.

95429	CACHING_VIEW_GETCAPABILITIES_RESPONSE_FROM_FILE	INSPIRE view service GetCapabilities cache file generated from response.
95430	CACHING_VIEW_CREATE_DIRECTORY	INSPIRE view service GetCapabilities cache directory created.
95431	CACHING_VIEW_DIRECTORY_EXISTS	INSPIRE view service GetCapabilities cache directory exists.
<b>95450 - 95499</b>	<b>SOE Streaming</b>	<b>Includes “chunk received from XtraSvr:” messages and any other streaming relevant existing statement.</b>
95450	SOE_STREAMING	General SOE Streaming information.
95451	SOE_STREAMING_ERR_CHUNK	SOE Streaming chunked error response.
95452	SOE_STREAMING_XS_RESPONSE_CHUNK	SOE Streaming chunked response.
<b>95500 – 95699</b>	<b>SQL statements</b>	<b>Read infoTables and SOE queries</b>
95500	SOE_SQLS	General SOE SQL information.
95501	SOE_IDI	General SOE REST IDI information.
95502	SOE_IDI_ADDING_LAYER	INSPIRE SOE adding layer to INSPIRE domain information.
95503	SOE_IDI_ANALYZING_LAYER	INSPIRE SOE analysing layer to generate INSPIRE domain information.
95504	SOE_SQLS_COLUMN_NOT_FOUND	Column not found on table error occurred while generating INSPIRE domain information.
95505	SOE_SQLS_EXECUTING_QUERY	Executing SQL queries on INSPIRE info tables to generate INSPIRE domain information.
95506	SOE_SQLS_EXECUTING_ROWCOUNT	Executing row count on SQL queries on INSPIRE info table to generate INSPIRE domain information.
95507	SOE_IDI_CREATING_INMEMORY_TABLE	Creating in memory table for faster access of INSPIRE domain information.
95508	SOE_SQLS_EXECUTING_QUERYSTRING	Executing SQL queries with constraints on INSPIRE info tables to generate INSPIRE domain information.

95509	SOE_IDI_INSERTING_VALUES_INMEMORY_TABLE	Inserting values in memory table for faster access of INSPIRE domain information.
95510	SOE_IDI_DROPPING_INMEMORY_TABLE_ERR	Error occurred while dropping in memory table.
95511	SOE_IDI_CLEANUP_INMEMORY_TABLE_ERR	Error occurred while clean-up of in memory table.
95512	SOE_IDI_TABLE_MISSING_OR_INACCESSIBLE	INSPIRE info table missing or inaccessible due to permission.
<b>95700 - 95799</b>	<b>WMS back end communication</b>	<b>“Forward to WMS ..” statements</b> <b>getCapabilities, getMap, and getLegend backend server component communication for view service (EXISTS)</b> <b>getFeatureInfo</b>
95700	INSPIREVIEW	INSPIRE View service general information.
95701	INSPIREVIEW_GETCAPABILITIES	INSPIRE view service GetCapabilities request general information.
95702	INSPIREVIEW_GETMAP	INSPIRE view service GetMap request general information.
95703	INSPIREVIEW_GETLEGEND	INSPIRE view service GetLegend request general information.
95704	INSPIREVIEW_FORWARD_REQUEST_TO_WMS	INSPIRE view service forwarding request to WMS Server.
95705	INSPIREVIEW_FORWARD_REQUEST_TO_WMS_START	INSPIRE view service forwarding request to WMS Server started.
95706	INSPIREVIEW_FORWARD_REQUEST_TO_WMS_GET_EXTN	INSPIRE view service forwarding request to WMS Server extension.
95707	INSPIREVIEW_FORWARD_REQUEST_TO_WMS_POSTED	INSPIRE view service request to WMS Server sent.
95708	INSPIREVIEW_FORWARD_REQUEST_TO_WMS_RESPONSE_DATA	INSPIRE view service received response from WMS Server.
95709	INSPIREVIEW_FORWARD_REQUEST_TO_WMS_WEB_REQUEST	INSPIRE view service forwarding request to WMS Server using web request handler.
95710	INSPIREVIEW_FORWARD_REQUEST_TO_WMS_WEB_REQUEST_DON	INSPIRE view service request to WMS Server using web request handler complete.

	E	
95711	INSPIREVIEW_LAYER_INTERNAL_NAME_ENCODING_ERR	Error occurred while encoding INSPIRE view service layer name.
95712	INSPIREVIEW_GETCAPABILITIES_RESPONSE_PROCESSING_BBOX_TRANSFORMATION_ERR	Error occurred while transforming response during processing.
95713	INSPIREVIEW_GETCAPABILITIES_RESPONSE_PROCESSING	INSPIRE view service processing GetCapabilities response.
95714	INSPIREVIEW_GETFEATUREINFO_REQUEST_TO_XS_WFS	INSPIRE view service forwarding GetFeatureInfo request to backend server component.
95715	INSPIREVIEW_GETFEATUREINFO_REQUEST_TO_XS_WFS_ERR	Error occurred while INSPIRE view service forwarding GetFeatureInfo request to backend server component.
95714	INSPIREVIEW_GETFEATUREINFO_CLICK_MAP_POINT	INSPIRE view service identify map click point while processing GetFeatureInfo request.
95715	INSPIREVIEW_GETFEATUREINFO_CLICK_ENVELOPE	INSPIRE view service identify map envelope while processing GetFeatureInfo request.
95716	INSPIREVIEW_GETFEATUREINFO_BOUNDING_BOX_PARSE	INSPIRE view service parsing bounding box while processing GetFeatureInfo request.
95717	INSPIREVIEW_GETFEATUREINFO_BOUNDING_BOX_PARSED	INSPIRE view service parsed bounding box while processing GetFeatureInfo request.
95718	INSPIREVIEW_WMTS_GETCAPABILITIES_CREATE_DIRECTORY	INSPIRE view service WMTS GetCapabilities cache directory creation.
95719	INSPIREVIEW_WMTS_GETCAPABILITIES_CREATE_DIRECTORY_EXISTS	INSPIRE view service WMTS GetCapabilities cache directory exists.
95720	INSPIREVIEW_GETMAP_STYLE_EXTERNAL_SLD_PARSE_ERR	Error occurred while processing INSPIRE view service GetMap request during parsing external SLD.
95721	INSPIREVIEW_GETMAP_STYLE_EXTERNAL_SLD_FILE_NOT_FOUND_OR_INACCESSIBLE	Error occurred while processing INSPIRE view service GetMap request, external SLD not found or inaccessible.
95722	INSPIREVIEW_PROCESS_REQUEST	INSPIRE view service request processing general information.
95800 –	<b>backend server component communication for download</b>	<b>backend server component (getFeature db execution) (EXISTS) getCapabilities, getFeature, getFeaturebyID, describe</b>

<b>95899</b>	<b>service</b>	
95800	INSPIREFEATUREDOWNLOAD	INSPIRE download service general information.
95801	INSPIREFEATUREDOWNLOAD_GET CAPABILITIES	INSPIRE download service GetCapabilities request processing information.
95802	INSPIREFEATUREDOWNLOAD_GET CAPABILITIES_RESPONSE_PROCES SING	INSPIRE download service GetCapabilities response processing information.
95803	INSPIREFEATUREDOWNLOAD_GET FEATURES	INSPIRE download service GetFeatures request processing information.
95804	INSPIREFEATUREDOWNLOAD_GET FEATUREBYID	INSPIRE download service GetFeatureById request processing information.
<b>95900 - 95949</b>	<b>Atom/predefined</b>	<b>Atom and INSPIRE predefined dataset download service related messages.</b>
95900	INSPIREPREDEFINEDDATASETDOWN LOAD	INSPIRE predefined dataset download service general information.
95901	INSPIREPREDEFINEDDATASETDOWN LOAD_ADD_STOREDQUERY	INSPIRE predefined dataset download service add stored query information.
95902	INSPIREPREDEFINEDDATASETDOWN LOAD_DELETE_STOREDQUERY	INSPIRE predefined dataset download service delete stored query information.
95903	INSPIREPREDEFINEDDATASETDOWN LOAD_LIST_STOREDQUERIES	INSPIRE predefined dataset download service list stored queries information.
95904	INSPIREPREDEFINEDDATASETDOWN LOAD_DESCRIBE_STOREDQUERY	INSPIRE predefined dataset download service describe stored query information.
95905	INSPIREPREDEFINEDDATASETDOWN LOAD_PREDEFINEDDATASET_TA BLE	INSPIRE predefined dataset download service support table information.
95906	INSPIREPREDEFINEDDATASETDOWN LOAD_ATOM_QUERY	INSPIRE predefined dataset download service ATOM query information.
95907	INSPIREPREDEFINEDDATASETDOWN LOAD_ATOM_FILE_ERR	INSPIRE predefined dataset download service ATOM file processing error information.
95908	INSPIREPREDEFINEDDATASETDOWN	INSPIRE predefined dataset download service ATOM data load



	NLOAD_ATOM_LOAD_DATA	information.
<b>95950 - 95999</b>	<b>Other</b>	<b>Miscellaneous messages</b>
95950	ECHO	INSPIRE test echo service general information.
95999	COMMON	INSPIRE general information messages.
95994	COMMON_XSLT_ERR	INSPIRE general xslt processing error messages.
95995	COMMON_DESKTOP_ERR	INSPIRE desktop extension error messages.
95996	COMMON_DESKTOP	INSPIRE desktop extension general messages.
95997	COMMON_INSPIRE_TEST	INSPIRE test suite general messages.
95998	COMMON_CRS_TRANSFORMATION	INSPIRE general CRS transformation messages.
<b>96000 – 96999</b>	<b>backend server component log</b>	<b>backend server component (config, SQL, gml mapping related) - reserved for future use.</b>

## 13 Appendix: ArcGIS for INSPIRE 10.3.1 to 10.8.2 Special Upgrade Instructions

The purpose of this appendix is to provide special installation instructions for users upgrading the 'ArcGIS for INSPIRE Server Extension' from version 10.3.1 to 10.8.2. The upgrade requires these special instructions because the necessary process to uninstall earlier versions may not properly clean up and unregister the XtraSrvCOM assembly. If you are upgrading from a more recent version (i.e., 10.4 – 10.6.1) these special instructions do not apply.

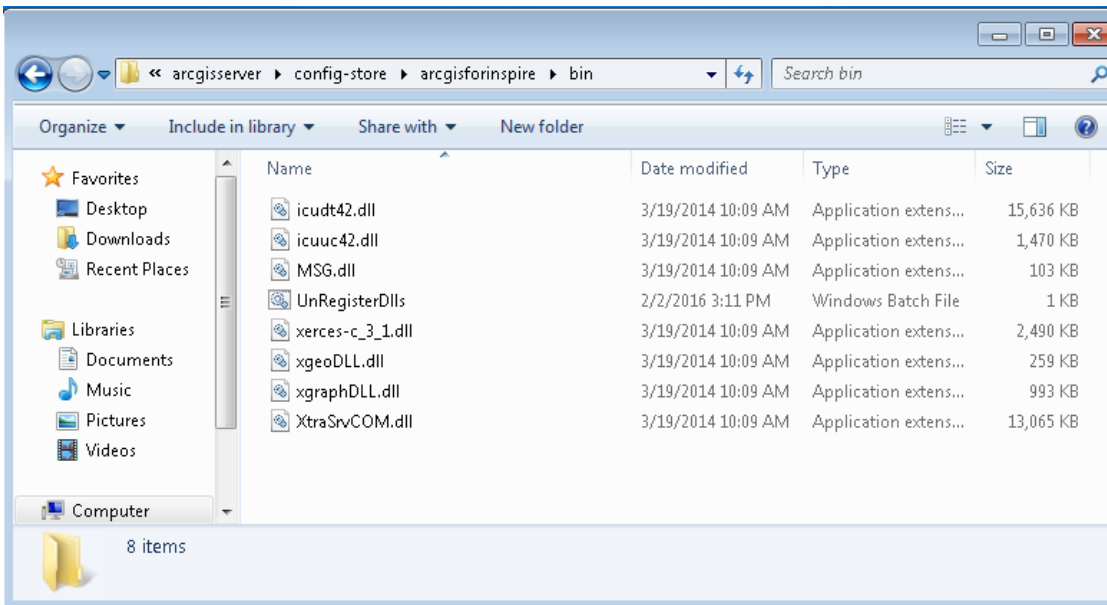
Please follow one of the following options to clean up the registry entries and install the extension. Options 1 and 2 will work best if followed before executing the 'ArcGIS for INSPIRE 10.8.2 – Server Extension' setup.exe to perform the 'ArcGIS for INSPIRE 10.8.2 – Server Extension' upgrade process. If you have already performed the 'ArcGIS for INSPIRE 10.8.2 – Server Extension' upgrade process, try following the instructions in Step 2a of both Option 1 and/or Option 2. Otherwise you may need to follow Option 3 to manually remove registry entries.

**IMPORTANT:** If you're running in a multiple GIS server site, repeat the steps from your chosen option below on every server in the site.

### **OPTION 1 – Remove XtraSrvCOM registration: Login as Administrator and use ArcGIS Server service user credentials to unregister old settings**

1. Login to the ArcGIS Server as a user with Administrative rights.
2. Stop all the ArcGIS for INSPIRE Services. Make sure that the ArcGIS Server service is running. If 'ArcGIS for INSPIRE 10.3.1 – Server Extension' application is still installed on the system, then proceed to Step 3, otherwise:
  - a. If ArcGIS for INSPIRE 10.3.1 has already been uninstalled, you will need to retrieve files from another 10.3.1 installation. If you have access to the 10.3.1 setup files, you can run an Administrative installation to get the files extracted. Once you have access to the files on the server, proceed to the next step.

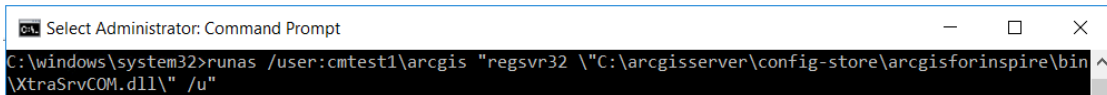
3. Find the path to the XtraSvrCOM.dll



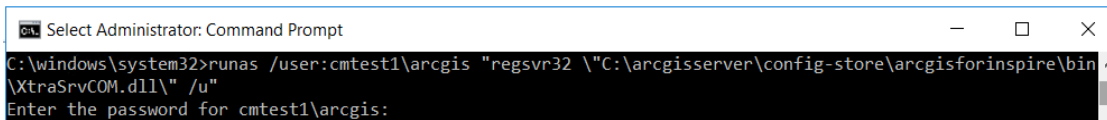
4. Open a command prompt window as Administrator and run the following command using the ArcGIS Server service user name with domain.

<code>C:\windows\system32>runas /user:myDomain\myUsername "regsvr32 \"C:\arcgisserver\config-store\arcgisforinspire\bin\XtraSvrCOM.dll\" /u"</code>

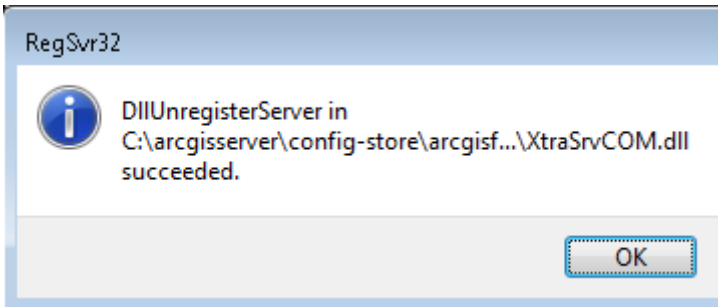
Example:



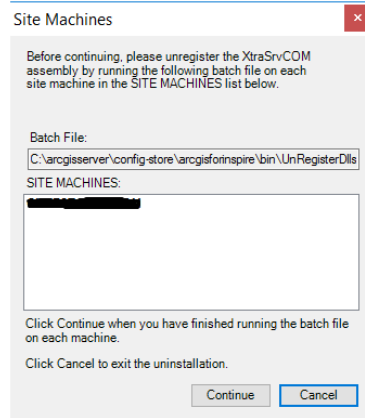
5. You will be prompted for the password for the ArcGIS Server service user. Enter the password and press Enter.



6. You should see the following dialog. Click ok.



- a. If you encounter errors unregistering the XtraSrvCOM.dll please see “Option 3 – Manually remove registry entries” below.
7. Navigate to the *ServerExt* folder and run setup.exe and follow instructions on the installation wizard interface.
    - a. During this process you will see the following dialog window. Please ignore by clicking the ‘Continue’ button.



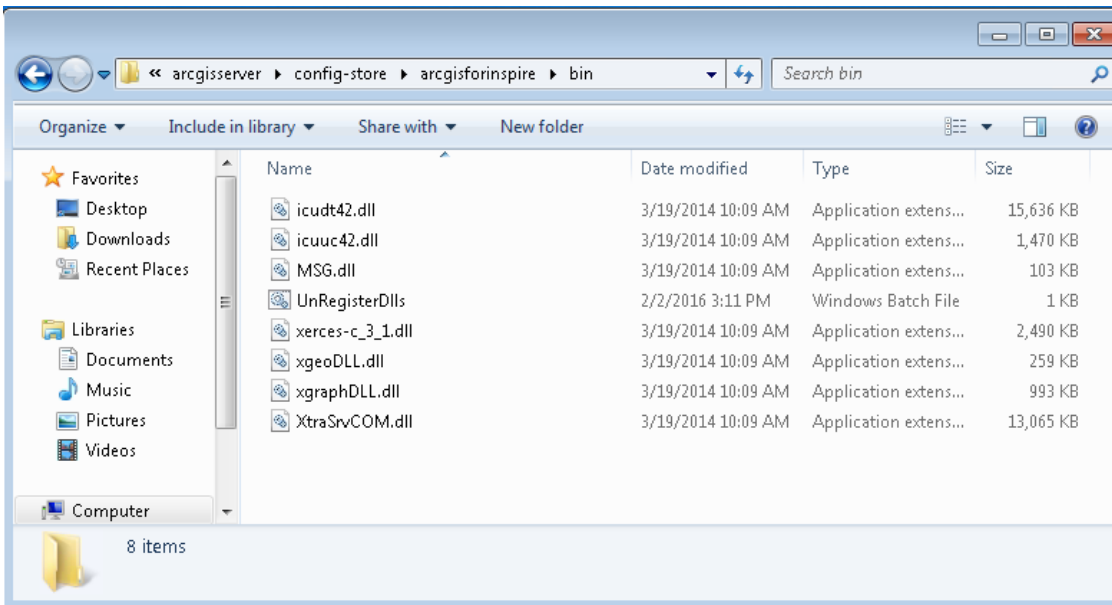
8. You need to authorise software to use the ‘ArcGIS for INSPIRE Server Extension’. Run the ArcGIS Software Authorization Wizard to authorise the installed server extension.

The installation is now completed. Proceed to section **5 Configuration** to configure ArcGIS for INSPIRE.

#### **OPTION 2 – Remove XtraSrvCOM registration: Login to the ArcGIS Server system as the ArcGIS Server service user**

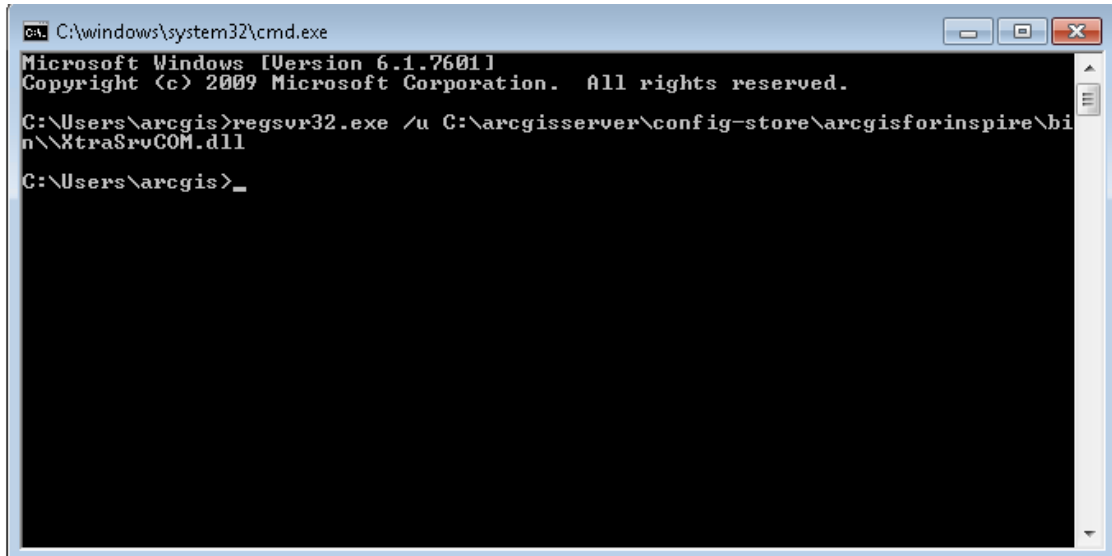
1. Login to the ArcGIS Server as the user for the ArcGIS Server service
2. Stop all the ArcGIS for INSPIRE Services. Make sure that the ArcGIS Server service is running. If ‘ArcGIS for INSPIRE 10.3.1 – Server Extension’ application is still installed on the system, then proceed to Step 3, otherwise:
  - a. If ArcGIS for INSPIRE 10.3.1 has already been uninstalled, you will need to retrieve files from another 10.3.1 installation. If you have access to the 10.3.1 setup files, you can run an Administrative installation to get the files extracted. Once you have access to the files on the server, proceed to the next step.

3. Find the path to the XtraSvrCOM.dll

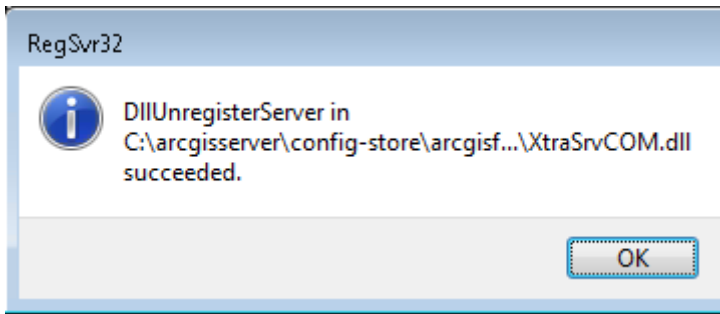


4. Open a command prompt window and run the following command  
`regsvr32.exe /u <Path to XtraSrvCOM.dll folder>\XtraSrvCOM.dll`

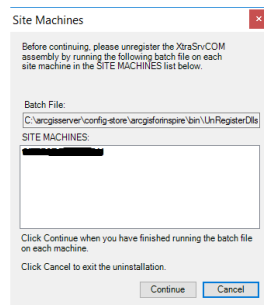
Example:



5. You should see the following dialog. Click ok.



- a. If you encounter errors unregistering the XtraSrvCOM.dll please see “Option 3 – Manually remove registry entries” below.
6. Navigate to the *ServerExt* folder and run setup.exe and follow instructions on the installation wizard interface.
  - a. During this process you will see the following dialog window. Please ignore by clicking the ‘Continue’ button.



- a.
7. You need to authorise software to use the ‘ArcGIS for INSPIRE Server Extension’. Run the ArcGIS Software Authorization Wizard to authorise the installed server extension.

The installation is now completed. Proceed to section **5 Configuration** to configure ArcGIS for INSPIRE.

### **OPTION 3 – Remove XtraSrvCOM registration: Manually remove registry entries**

#### **Make a backup of the registry.**

It’s recommended to not to have any version of ArcGIS for INSPIRE installed at this point. If a newer version is installed, please stop the ArcGIS Server service as described in Step 2 in the previous options.

Remove the following registry entries:

Note: The values highlighted in **cyan** will be different depending on the user id in the registry. The values highlighted in **yellow** are the registry keys that need to be removed.

```
[HKEY_LOCAL_MACHINE\SOFTWARE\Microsoft\Windows\CurrentVersion\Installer\UserData\S-1-5-18\Components\FE3A6FD606AF63BDA322EB410D758623] (Note: This entry exists if the INSPIRE application is still currently installed)
```

```
[HKEY_LOCAL_MACHINE\SOFTWARE\Wow6432Node\Microsoft\Windows\CurrentVersion\SharedDLLs]
"C:\\arcgisserver\\config-store\\arcgisforinspire\\bin\\XtraSrvCOM.dll"=dword:00000001 (Note: This entry exists if the INSPIRE application is still currently installed)
```

```
HKEY_USERS\S-1-5-21-1883117610-3455764801-612081615-1015\Software\Classes\AppID\{7F14D19B-54F5-4D96-B3E5-D519D7C24155}]
```

```
[HKEY_USERS\S-1-5-21-1883117610-3455764801-612081615-1015\Software\Classes\AppID\XtraSrvCOM.DLL]
```

```
[HKEY_USERS\S-1-5-21-1883117610-3455764801-612081615-1015\Software\Classes\CLSID\{EFADB181-ABF1-4871-BC27-319BBE4544AF}]
```

```
[HKEY_USERS\S-1-5-21-1883117610-3455764801-612081615-1015\Software\Classes\TypeLib\{58AC5B7B-27D4-4EFA-8864-A957B547ABF7}]
```

```
[HKEY_USERS\S-1-5-21-1883117610-3455764801-612081615-1015\Software\Classes\XtraSrvCOM.XtraServer]
```

```
[HKEY_USERS\S-1-5-21-1883117610-3455764801-612081615-1015\Software\Classes\XtraSrvCOM.XtraServer.1]
```

Note: The following registry keys may not exist after deleting the preceding keys above.

```
[HKEY_USERS\S-1-5-21-1883117610-3455764801-612081615-1015_Classes\AppID\{7F14D19B-54F5-4D96-B3E5-D519D7C24155}]
```

```
[HKEY_USERS\S-1-5-21-1883117610-3455764801-612081615-1015_Classes\AppID\XtraSrvCOM.DLL]
```

```
[HKEY_USERS\S-1-5-21-1883117610-3455764801-612081615-1015_Classes\CLSID\{EFADB181-ABF1-4871-BC27-319BBE4544AF}]
```

```
[HKEY_USERS\S-1-5-21-1883117610-3455764801-612081615-1015_Classes\XtraSrvCOM.XtraServer]
```

```
[HKEY_USERS\S-1-5-21-1883117610-3455764801-612081615-1015_Classes\TypeLib\{58AC5B7B-27D4-4EFA-8864-A957B547ABF7}]
```

```
[HKEY_USERS\S-1-5-21-1883117610-3455764801-612081615-1015_Classes\XtraSrvCOM.XtraServer.1]
```